

Owslebury News

The latest news and views from our small but mighty school

Collaboration

Aspiration

Resilience

Respect

Nurture



Message from Mrs Chaplen

Dear Parents and Carers,

Thank you to all the parents and carers who attended Parents' Evening this week. It was wonderful to see so many of you engaged and involved in your child's learning. Your support truly matters, and as William Bennett said so perfectly:

"Children thrive at school when their parents take an active interest in their learning." - William Bennett

This has certainly been reflected across our school community.

Our Scholastic Book Fair continues until next Monday and it has been fantastic to see so many children buzzing with excitement about books and reading. Thank you for supporting this event, not only does it nurture a love of reading, but it also helps us earn new books for our classrooms.

This week, I'd also like to shine a light on maths, where the children's confidence is really growing. Across the school, their enthusiasm and thinking have been a joy to see. Year R have shown brilliant number oracy, Morestead are applying their knowledge with excellent reasoning, Baybridge are confidently working with linear number and explaining their ideas, and Hensting are deepening their understanding of fractions and how they connect to wider maths. For me, maths is all about spotting patterns, and it's wonderful to see our children developing these skills and becoming life-long mathematicians.

The sudden cold snap this week certainly took us all by surprise, but the children have shown real resilience. Another one of our school values shining through. Monday's snow shower completely distracted us during assembly, but we made the most of it with a mindful moment watching the flakes drift down. We were all a little disappointed that it was too wet to settle!

As the weather continues to turn, please make sure children come to school dressed appropriately, and that every item is named: coats, hats and each individual glove (we currently have lots of single gloves without partners!).

Wishing you all a lovely weekend x

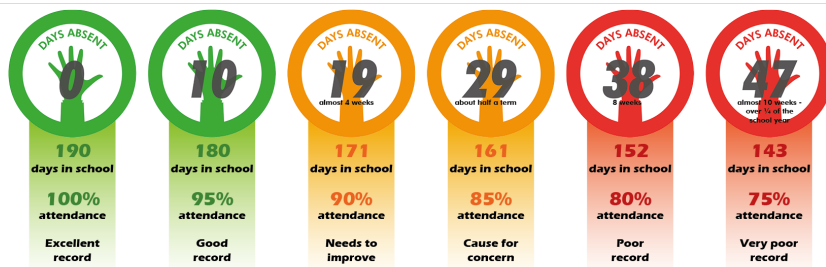
ATTENDANCE

CLASS	Weekly Attendance	Average This Year
Marwell	100%	98.6%
Morestead	96.4%	95.2%
Baybridge	93.3%	96%
Hensting	95.9%	94.4%

MOMENTS MATTER, ATTENDANCE COUNTS.

'Being in school and having the best attendance possible underpins all the many benefits of school for your child, such as their learning, wellbeing and wider development'

As a parent it is your legal responsibility to ensure your child receives a suitable full time education and your child attends school each day and is on time.



Dates for the diary



Monday 24th November	Scholastic Book Fair after school—4:00pm.
Friday 28th November @2.45pm	Celebration Assembly
Friday 28th November	Non-Uniform Day—Bottle Tombola
Monday 1st December	INSET DAY CLOSURE
Friday 5th December	Non-Uniform day—Chocolate Tombola
Friday 5th December	School Christmas Fair
Thursday 9th December	Hensting class trip to the Planetarium
Wednesday 10th December 9:30am	Nativity Performance
Thursday 11th December 2:15pm	Nativity Performance Choir to sing carols in the village after school—all invited
Friday 12th December 2pm	Christmas Carols at St Andrews Church—all welcome
Tuesday 16th December	Secret Santa Shopping Event. Volunteers needed for Wrapping.
Wednesday 17th December	Fundraising event in school for Naomi House. Details to come next week.
Thursday 18th December	Christmas Lunch in school
Friday 19th December 1.15pm	Celebration Assembly & Carols around the tree

Christmas Holiday Lunch Scheme

We are inviting families with school-aged children (who live or attend a school in the city of Winchester and some surrounding areas, including Alresford) who feel they need some extra help over the school holidays to register for our Holiday Lunch Scheme.

The aim of the scheme is to provide food to cover 5 lunches per child per week. Please note that the holiday lunch scheme is in addition to our normal operation, and does not count towards the number of standard vouchers you can receive. However, we ask that you don't claim both during the same period of time. If you need more support, please register for a full food parcel for all the family – www.winchesterbasicsbank.co.uk/get-help Please be aware that the food supplied is designed to replace the hot meal and will be tinned/dried; we do not have food items suitable for packed lunch style meals. We can offer food suitable for most dietary requirements.

This year we have 5 locations for you to collect from; Badger Farm, Bar End, Highcliffe, New Alresford, Weeke, – operating on specific days (Mon – Fri). You will be asked to nominate which location you will be collecting your food from – please choose carefully. The location cannot be changed.

Badger Farm (Community Centre, SO22 4QB) – Monday 15th December, 10 a.m. to 12.30 p.m.
Bar End (The Vineyard Church, SO23 9NR) – Monday 15th and Thursday 18th December, 10 a.m. – 12 p.m.;
Highcliffe (21a Penton Place, Milland Road, SO23 0PZ) – Tuesday 16th and Friday 19th December, 10 a.m. to 3 p.m.
New Alresford (St Gregory's Church, SO24 9HD) – Wednesday 17th December, 10 a.m. – 12 p.m.;
Weeke (St Barnabas Church, SO22 6DS) – Thursday 18th December, 10 a.m. to 12.30 p.m. You will be asked to nominate which location you will be collecting your food from – please think carefully about this as we cannot change it! Those who need a delivery can apply online.

Closing date will be Sunday 7th December 2025. [Holiday Lunch Scheme - Christmas 2025](#)

Safeguarding



Important Online Safety Alert



We have been made aware of a pop-up appearing on Roblox that encourages children to download an app called **Pollybuzz** (sometimes spelled **Pollyfuzz**).

This app may seem harmless at first, asking children simple questions and creating an AI “friend.” However, it has been reported that the content can quickly become extreme, including references to **suicide, self-harm, and pornography**.

What Parents Can Do

- Remind your child not to click on **pop-ups** in games.
- Encourage them to report anything worrying or inappropriate to a trusted adult.
- Review and enable **Roblox parental controls**. Instructions can be found here: [Parental Controls Overview – Roblox Support](#).

Please note: Parental controls can reduce pop-ups but will not block all risks, so active supervision remains essential.

At The National College, our WakeUpWednesday guides empower and equip parents, carers and educators with the confidence and practical skills to be able to have informed and age-appropriate conversations with children about online safety, mental health and wellbeing, and climate change. Formerly delivered by National Online Safety, these guides now address wider topics and themes. For further guides, hints and tips, please visit nationalcollege.com.

What Parents & Educators Need to Know about ROBLOX

Roblox is one of the most popular video games among children. In 2020, the game's developers claimed that more than half of the USA's children had played it. As a sandbox title, the game lets developers create their own gaming experiences with Roblox Studio to build custom levels, which can then be shared online.

AGE RESTRICTION PEGI 7

WHAT ARE THE RISKS?

- ONLINE PLAY RISKS**
Because Roblox connects random players across the world, it can put younger players into an environment with anonymous users who could use the platform for nefarious reasons. For example, some role-play games are used for online dates and mature role play, which could expose youngsters to inappropriate messages in the public chat box.
- MATURE CONTENT**
Content is difficult to moderate throughout Roblox, due to the number of games available. This is particularly notable on smaller games and experiences, but in summary, some of the games and experiences offered on the platform contain age-inappropriate content that could easily be seen by young players.
- IN-GAME SPENDING**
The majority of games within Roblox have extensive monetisation options, usually through season passes or micro-transactions. Purchases can range in value from a few pennies up to much larger sums of money. While some games offer a lot of content via purchases, others can offer very little for real world money, causing younger players to end up out of pocket.
- ANONYMOUS PLAYERS**
The anonymity of users can leave players vulnerable to bullying, harassment, and predatory behaviour. Without the right parental controls or monitoring, users can connect with each other via personal messages or friend requests, and it is very difficult to know who's behind a username in this vast online world.
- RISK OF ADDICTION**
Roblox games can feature rewarding or satisfying mechanics that keep players coming back – or persuade them to stay logged-in for much longer. Like most games, they focus on interactivity, with constant rewards via in-game unlocks and currencies, which can sometimes lead to an addictive need to remain online for long periods of time.
- SCAMS**
Many of the games on Roblox feature collectible items, pets, or characters. These objects, while digital, are worth a lot of real money on certain online markets. Scammers will attempt to trade with younger users in the hopes of getting rare items that can be sold for real money, manipulating the child into handing them over, usually via misleading information.

Advice for Parents & Educators

- MONITOR THE CONTENT**
While Roblox does implement plenty of moderation tools and parental controls, it's up to parents and guardians to monitor the types of games a child or impressionable player is experiencing. If a youngster wants to play Roblox, be sure to check out which specific games they want to play within it, and get a good idea of their content.
- TAKE ADVANTAGE OF TOOLS**
Use the parental controls within the game itself and teach youngsters how to report and block other players. Knowing the powers within their reach will make Roblox a safer, happier experience. You can set age ranges for who's allowed to contact you, close public chat boxes, block spending, and even make your Roblox profile completely private. All these options are helpful in cutting off bad actors from engaging with children.
- PLAY TOGETHER**
Consider playing Roblox with the children in your care. There are few more effective ways to see how moderation works, gauge whether the game could lead to addictive behaviours, or even witness how interaction between players works, than sitting down and trying the game for yourself. This should help you figure out whether it's suitable for particular children.
- TEACH ONLINE BEHAVIOURS**
Have an open conversation about the risks of online play and how to spend money wisely. By being honest and giving tips on how a younger user can protect themselves, you can empower them to not only take care of themselves, but others too. Any user can be reported to Roblox moderators by other players for behaving inappropriately. With this knowledge, younger players can be aware of what to look for and help prevent it.

Meet Our Expert
Dan Lipscombe is a videogame journalist and author of over 20 books on gaming, including books on Minecraft, Fortnite, Roblox, and more. For 15 years he has been writing about his passion for gaming. When he's not playing games, he's talking about them at GAMINGBIBLE.

[@wake_up_weds](#) www.thenationalcollege [@wake.up.wednesday](#) [@wake.up.weds](#)

Users of this guide do so at their own discretion. No liability is entered into. Current as of the date of release: 16.04.2025

WakeUpWednesday
The National College



THE FRIENDS
of Owslebury School

Friends of Owslebury School

<p>Kids Disco</p> <p>HALLOWEEN DISCO 4.30-5pm</p> <p>24 OCTOBER</p>	<p>Family Event</p> <p>CHRISTMAS FAIR 3.30-6pm</p> <p>5 DECEMBER</p>
<p>Adult Social</p> <p>QUIZ NIGHT</p> <p>6 FEBRUARY</p>	<p>Kids Event</p> <p>MOVIE NIGHT</p> <p>20 MARCH</p>
<p>Family Event</p> <p>MAY DAY FUN</p> <p>1 MAY</p>	<p>Family Event</p> <p>SUMMER FAIR</p> <p>SATURDAY IN JULY TBC</p>

FAMILY **GINGERBREAD HOUSE** COMPETITION

PRE ORDER YOUR READY BAKED KIT BY 12 NOON 21ST NOVEMBER

£10 ENTRY

COLLECT FRIDAY 21ST AFTER SCHOOL

BRING YOUR DECORATED MASTERPIECE TO THE CHRISTMAS FAIR ON DECEMBER 5TH FOR THE CHANCE TO WIN A PRIZE

EMAIL: FRIENDSOFOWSLEBURY@GMAIL.COM TO ENTER

2025

CHRISTMAS FAIR

5TH DEC. (AFTER SCHOOL) 2025

THE WINTER TERM IS IN FULL SWING AND IT WILL SOON BE TIME FOR US TO CELEBRATE AT THE CHRISTMAS FAIR. HERE BE OUR ANNUAL CALL OUT FOR SUPPORT AND KIND DONATIONS - ALL DETAILED BELOW...

NON UNIFORM DAYS

In exchange for your generous (voluntary) donations.

- **FRIDAY 28th Nov** - Please bring in a bottle for our **BOTTLE** tombola. A bottle of anything please!
- **FRIDAY 5th Dec (Christmas fair day)**- Please bring in a chocolate donation for our **CHOCOLATE** tombola. A selection box, sweets or wrapped chocolate. No nuts please!

FILL A STRIPEY TREAT BAGS - We are asking families to please fill these with little treats for children to win. e.g little toys /stationery /stickers/ sweets and/or chocolates. They will be in your child's book bag this weeks. Please make sure any food is pre-wrapped with no nut products!! Return day is 21st Nov. If you are feeling extra generous there are spare bags in the school office.

BAKE OR MAKE for the Friends cafe - Would you be able to donate a cake or treat for the fair? If YES then please contact Anna Knight on 07971839308

VOLUNTEER TO HELP- If you have an hour or two to spare helping set up/ pack down or helping in a stall then please let Kate know on 07775332649, be great to have you for any time you have to spare!

THANK YOU

WE NEED YOUR HELP!

£2 entry per family

THE FRIENDS OF OWSLEBURY SCHOOL

CHRISTMAS FAIR

FRIDAY 5TH DECEMBER 3.30-6PM

GINGERBREAD HOUSE COMPETITION

SANTAS WAGON & GROTTO

HOT FOOD

MULLED WINE

GAMES

FRIENDS CAFE

FACE PAINTING

OWSLEBURY SCHOOL CHOIR

BOTTLE & CHOCOLATE TOMBOLA

ACTIVE 8 MINDS

ROMSEY 'LETS SING' CHOIR

OWLS CHRISTMAS CRAFT

& THE RAFFLE

The Friends of Owslebury are raising money to support our small but MIGHTY school - with a particular focus on the new OUTDOOR LEARNING AREA FOR 2026 & BEYOND