

# Owslebury News

The latest news and views from our small but mighty school

Collaboration

Aspiration

Resilience

Respect

Nurture



## Message from Mrs Chaplen

Dear Parents and Carers,

This week has been full of community spirit, bringing our Owslebury family together in such a meaningful way. Our fantastic PTA Chair and Chair of Governors kindly volunteered their time to work with each class to create willow lanterns for the Christmas Fair. It was a wonderful opportunity for the children to collaborate across age groups and to show real resilience when the willow needed “warming up” to bend. I can’t wait to see the magical effect of their creations on display next Friday.



Morestead Class enjoyed an exciting Arctic Explorer workshop, thanks to a brilliant parent volunteer who shared fascinating facts and real-life items used on extreme expeditions. The children prepared thoughtful questions beforehand and returned buzzing with new knowledge which they eagerly recorded in their writing. Thank you for helping us make learning so memorable.

You may have noticed that some of our OWLS resources and equipment in the woodland barked area have unfortunately been damaged or disturbed outside of session times. Please can we kindly ask that all items are left alone, and that parents supervise their children closely at the beginning and end of the school day to ensure these areas remain respected and ready for learning.

Hopefully, you will have seen the parent survey sent out this week. Your feedback is incredibly valuable and helps us shape our next steps as a school. If you haven’t yet had the chance to complete it, here is the link again: <https://forms.office.com/e/dCHShLtR1d> and QR code The survey closes on 11th December.



Enjoy the extended weekend with our INSET day on Monday, and I look forward to welcoming children and families back on Tuesday 2nd December, when the Christmas magic will begin.

Have a lovely weekend

x

## ATTENDANCE

CLASS	Weekly Attendance	Average This Year
Marwell	100%	98.7%
Morestead	93.2%	95.5%
Baybridge	96.7%	95.5%
Hensting	98.9%	94.8%



## Attendance Ladder



Updated school guidance about attendance processes at Owslebury Primary School on the following page.

You can access the more information via our website:  
[www.owslebury.hants.sch.uk/attendance](http://www.owslebury.hants.sch.uk/attendance)

# Attendance Update

## Attendance Concerns Flowchart



Children's attendance to school is monitored on a case by case basis and actions and interventions are carried out as required. We want to work with you and your child in a supportive manner to improve and maintain good attendance

### IF A CHILDS ATTENDANCE FALLS BELOW 95%

If there are emerging concerns about attendance, a letter will be sent out outlining our concerns and reminding parent/carers of the importance of good attendance and encourage parents/carers to seek support and advice.

DOES CHILDS ATTENDANCE IMPROVE?

YES

No further action. Child's attendance is monitored in line with school policy.

NO

A second letter will be sent home to parents. Where appropriate, medical evidence will be requested to authorise additional absences.

- Parent/Carers will be invited into school for a meeting with Attendance Lead. Attendance action plan will be agreed
- Fixed Penalty Notice warning letter will be sent if there are further sessions of unauthorised absences.

YES

No further action. Child's attendance is monitored in line with school policy.

DOES A CHILDS ATTENDANCE IMPROVE?

NO

DOES CHILDS ATTENDANCE IMPROVE?

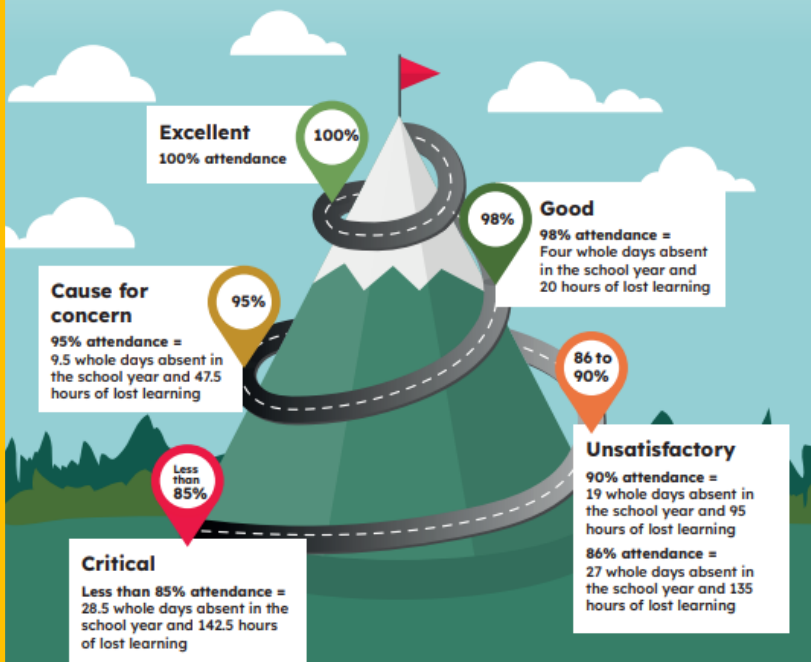
YES

Child's attendance is closely monitored in line with school policy. Medical evidence will still be requested to authorise additional absences.

NO

- Fixed Penalty Notice will be requested
- or
- A referral will be made to the Educational Welfare Service

## Where does your child sit on the attendance mountain?



## HERO



Here, every day, ready and on time

### Minutes lost per day

5 minutes    10 minutes    15 minutes    20 minutes    25 minutes

equates to a yearly loss of:



Five minutes late per day adds up to three learning days lost in a school year

If 15 minutes late each day you will miss two full weeks of school in one year

Poor timekeeping means less chance of success!

## Dates for the diary



Monday 1st December	INSET DAY CLOSURE
Tuesday 2nd December 1pm-3pm	Inter Schools Cross Country Event at Places Leisure Centre for those children taking part
Friday 5th December	Non-Uniform day—Chocolate Tombola
Friday 5th December	School Christmas Fair
Thursday 9th December	Hensting class trip to the Planetarium
Wednesday 10th December 9:30am	Nativity Performance
Thursday 11th December 2:15pm	Nativity Performance Choir to sing carols in the village after school—all invited
Friday 12th December 2pm	Christmas Carols at St Andrews Church—all welcome
Tuesday 16th December	Secret Santa Shopping Event. Volunteers needed for Wrapping.
Wednesday 17th December	Fundraising event in school for Naomi House. Details to come next week.
Thursday 18th December	Christmas Lunch in school
Friday 19th December 1.15pm	Celebration Assembly & Carols around the tree

07764 781368

[ben@active8minds-winchester.co.uk](mailto:ben@active8minds-winchester.co.uk)

[www.active8minds-winchester.co.uk](http://www.active8minds-winchester.co.uk)


Wrap Around Care  
contact details



# Congratulations!

**THANK YOU TO EVERYONE  
WHO ATTENDED OUR  
SCHOLASTIC BOOK FAIR.**

Together we have raised...£161.00...  
for our school to spend on **FREE BOOKS**

 SCHOLASTIC



THE FRIENDS  
of Owslebury School

Friends of Owslebury School

<p><b>Kids Disco</b></p> <p><b>HALLOWEEN DISCO</b> 4.30-5pm</p> <p><b>24 OCTOBER</b></p>	<p><b>Family Event</b></p> <p><b>CHRISTMAS FAIR</b> 3.30-6pm</p> <p><b>5 DECEMBER</b></p>
<p><b>Adult Social</b></p> <p><b>QUIZ NIGHT</b></p> <p><b>6 FEBRUARY</b></p>	<p><b>Kids Event</b></p> <p><b>MOVIE NIGHT</b></p> <p><b>20 MARCH</b></p>
<p><b>Family Event</b></p> <p><b>MAY DAY FUN</b></p> <p><b>1 MAY</b></p>	<p><b>Family Event</b></p> <p><b>SUMMER FAIR</b></p> <p><b>SATURDAY IN JULY TBC</b></p>

FAMILY **GINGERBREAD HOUSE** COMPETITION

PRE ORDER YOUR READY BAKED KIT BY 12 NOON 21<sup>ST</sup> NOVEMBER

£10 ENTRY

COLLECT FRIDAY 21<sup>ST</sup> AFTER SCHOOL

BRING YOUR DECORATED MASTERPIECE TO THE CHRISTMAS FAIR ON DECEMBER 5<sup>TH</sup> FOR THE CHANCE TO WIN A PRIZE

2025

EMAIL: FRIENDSOFOWSLEBURY@GMAIL.COM TO ENTER

# CHRISTMAS FAIR

5<sup>TH</sup> DEC. (AFTER SCHOOL) 2025

THE WINTER TERM IS IN FULL SWING AND IT WILL SOON BE TIME FOR US TO CELEBRATE AT THE CHRISTMAS FAIR. HERE BE OUR ANNUAL CALL OUT FOR SUPPORT AND KIND DONATIONS - ALL DETAILED BELOW...

**NON UNIFORM DAYS**  
*In exchange for your generous (voluntary) donations.*

- FRIDAY 28<sup>th</sup> Nov** - Please bring in a bottle for our **BOTTLE** tombola. A bottle of anything please!
- FRIDAY 5<sup>th</sup> Dec (Christmas fair day)**- Please bring in a chocolate donation for our **CHOCOLATE** tombola. A selection box, sweets or wrapped chocolate. No nuts please!

**FILL A STRIPEY TREAT BAGS** - We are asking families to please fill these with little treats for children to win. e.g little toys /stationery /stickers/ sweets and/or chocolates. They will be in your child's book bag this weeks. Please make sure any food is pre-wrapped with no nut products!! Return day is 21<sup>st</sup> Nov. If you are feeling extra generous there are spare bags in the school office.

**BAKE OR MAKE** for the Friends cafe - Would you be able to donate a cake or treat for the fair? If YES then please contact Anna Knight on 07971839308

**VOLUNTEER TO HELP**- If you have an hour or two to spare helping set up/ pack down or helping in a stall then please let Kate know on 07775332649, be great to have you for any time you have to spare!

## THANK YOU

WE NEED YOUR HELP!

£2 entry per family

THE FRIENDS OF OWSLEBURY SCHOOL

# CHRISTMAS FAIR

FRIDAY 5<sup>TH</sup> DECEMBER 3.30-6PM

GINGERBREAD HOUSE COMPETITION

SANTAS WAGON & GROTTO

HOT FOOD

MULLED WINE

GAMES

FRIENDS CAFE

FACE PAINTING

OWSLEBURY SCHOOL CHOIR

BOTTLE & CHOCOLATE TOMBOLA

ACTIVE 8 MINDS

ROMSEY 'LETS SING' CHOIR

OWLS CHRISTMAS CRAFT

& THE RAFFLE

The Friends of Owslebury are raising money to support our small but MIGHTY school - with a particular focus on the new OUTDOOR LEARNING AREA FOR 2026 & BEYOND