

Owslebury News

The latest news and views from our small but mighty school

Collaboration

Aspiration

Resilience

Respect

Nurture



Message from Mrs Chaplen

Dear Parents and Carers,

We also celebrated our Harvest Festival this week. A huge thank you to Reverend Draisey and the team at St. Andrew's Church for hosting us. It was wonderful to be out in the community, sharing our gratitude and generosity through the many donations you kindly sent in. Winchester Food Bank will be incredibly grateful to receive these gifts in support of those in need. Thank you, families, for being so supportive and charitable.

We've had lots of visitors in school this week and I'm proud to say the feedback has been glowing. They have commented on how happy the children seem, the calm and purposeful atmosphere around the school, and the high standard of work happening in classrooms. Children's pride in their learning is clear everywhere you go, and I've especially enjoyed when pupils have brought me their work to show off their fantastic progress.

Our staff team have also been exceptional this week, working together so collaboratively to ensure our children receive the highest quality teaching and learning. It's been wonderful to see them supporting pupils to show their very best behaviour, always guided by our three school rules: be kind, be respectful and be your best. It's lovely to hear positive praise for those children who are consistently doing the right thing and living out our school values every single day.

As you might have seen, our new Head Students have sprung into action during their very first week in post. They played a lead role in the Harvest Festival and have already been thinking creatively about how to share pupil voice across the school, our website and Instagram.

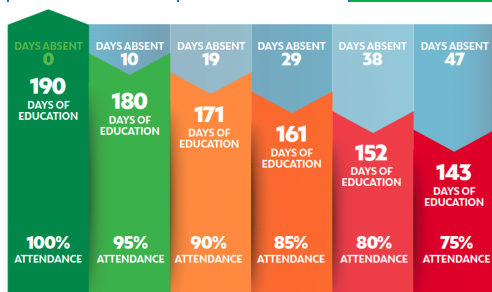
Thank you as well to those families who have supported our marketing push by sharing flyers for our upcoming open mornings. We really do want the wider world to know just how unique and special Owslebury Primary is—from our expansive school grounds and outdoor learning opportunities to the creative and inspiring teaching that makes learning here such a joy. Please continue to spread the word!

Wishing you all a restful weekend

x

ATTENDANCE

CLASS	Weekly Attendance	Average This Year
Marwell	100%	99.17%
Morestead	95.38%	95.02%
Baybridge	95.33%	95.93%
Hensting	90.91%	95.78%



Strategies to Improve Attendance and Punctuality

- **After school and bedtime routines** – packing a school bag ready for the next day, clear routine for after school activities, and getting to bed earlier, setting a time for devices to be turned off, set bedtime.
- **Morning routines** – setting the alarm earlier, no screen time until ready for school (and maybe not even then), having breakfast before leaving home, meeting a reliable friend to walk into school with.
- Coming to school for breakfast club from 7.30am (See Activ8 contact details)
- Daily chats about the magic moments experienced by being in school that day.
- Setting up weekly small rewards for good attendance and punctuality.

Dates for the diary



Monday 6th October	Photographer in school for individual photographs
Monday 13th October	OPEN MORNING—YrR 2026
Tuesday 21st October	Baybridge Class trip to Butser Farm
Thursday 23rd October	Morestead Fairy Tale Celebration Day– dress-up
Friday 24th October @2.45pm	Celebration Assembly
Friday 24th October	Halloween Disco
Friday 7th November- 8.45-9.30am	Morestead PLT Open Class – Drop-in
Monday 10th November	OPEN MORNING—Yr R 2026
Tuesday 11th November	Bags 2 School collection
Monday 17th November	Parents Evening 3:30-5:30pm
Thursday 20th November	FLU immunisations (whole school—see email sent out earlier this week) Parents Evening 3:30pm—5:30pm
Friday 28th November @2.45pm	Celebration Assembly
Monday 1st December	INSET DAY CLOSURE
Friday 5th December	School Christmas Fair
Thursday 9th December	Hensting class trip to the Planetarium
Wednesday 10th December 9:30am	Nativity Performance
Thursday 11th December 2:15pm	Nativity Performance
Friday 12th December 2pm	Christmas Carols at St Andrews Church—all welcome
Thursday 18th December	Christmas Lunch in school
Friday 19th December 1.15pm	Celebration Assembly & Carols around the tree

NOTIFICATION OF PE and FOREST SCHOOL Autumn Term 1 2025

OWLS Baybridge Class MONDAY PM wellies and waterproof coat needed

PE DAYS

MONDAY MORESTEAD
TUESDAY BAYBRIDGE/ HENSTING
WEDNESDAY MARWELL, MORESTEAD, BAYBRIDGE & HENSTING

Children wear PE kit to school on PE days, except for Marwell Class. Marwell class wear uniform and change into PE clothes.

INSET DAY CLOSURES FOR 2025-26

Monday 1st December 2025
Monday 23rd February 2026
Monday 1st June 2026

INFORMATION



Year 6 Parents

As you may be aware, applications for children transferring to secondary school in September 2026 are now open.

Applications can be submitted [online](#) or parents can request a form by emailing admissions.team@hants.gov.uk. The deadline for applications is 31 October 2025.

- Name three schools on your application to maximise your chances of being offered a place at one of your preferred schools.
 - Submit your application on-time, before the 31 October deadline.
- Use the County Council's [school catchment area finder](#) to check the catchment school for your address
- Read the school's admission policies to find out how many places are available and what criteria will be used to allocate places if the school is oversubscribed.
- Think about how your child will get to school. See [travel to school](#) to help plan your journey and find out if you are eligible for help with transport. You must name your catchment school(s) if you have one, as a preference if you wish to apply for travel assistance.

Owslebury School HOLIDAY CLUB

SPORTS ZONE | ACTION ZONE | CHILL ZONE | ART AND CRAFTS

Early Bird 15% off
Code: Autumn15
Expires 3rd October

AGES YEAR R- YEAR 7
PRICES FROM £27
SIBLING DISCOUNT AVAILABLE
8AM - 5PM

SCAN ME

07764781368
ben@active8minds-winchester.co.uk
www.active8minds-winchester.co.uk

Ofsted Registered
Friendly & Qualified Staff
Staff DBS
Safeguarding & First Aid Trained
Childcare Vouchers Accepted

Would you like to be a school governor?



Hi Everyone,

At our school, there are many ways to get involved and make a real impact. One of the most rewarding ways to contribute is by joining our School Governing Body. Currently, we have a fantastic team of 7 governors, but we have space for two more passionate individuals who want to help shape the future of our school.

Being a governor is a fulfilling and impactful way to be an active part of our school community. Your insights, skills, and support could make a big difference to the children and staff. If you are interested in joining us, we would love to hear from you!

More info is available [here](#) on the Hampshire County Council website, including a short video.

If you would like to have a chat with one of the current team, please contact the office at adminoffice@owslebury.hants.sch.uk

Thanks,
Allison, Isobel, Trevor, Nicky, Adrian, Brigid and Amy
(Owslebury Primary's Governing Body)

07764 781368
ben@active8minds-winchester.co.uk
www.active8minds-winchester.co.uk



Wrap Around Care contact de-



THE FRIENDS
of Owslebury School

Friends of Owslebury School

Our Fantastic PTA are preparing a year of fun events to raise money for the school.

Our next event is the Halloween Disco and we hope to see as many children there as possible.

Thank you for supporting the PTA events.



Owslebury Primary School

**MENTAL
HEALTH
SUPPORT
TEAM**

PARENT WORKSHOP

Supporting Emotional Regulation

In response to feedback from our Summer 2025 parent survey, we're offering a 90-minute Emotional Regulation Workshop for parents and carers.

This session will explore practical strategies to help children understand and manage their emotions—supporting their wellbeing both at home and in school.

✓ **Sign up via Arbor to secure your place!**

For More Information

<https://hampshirecamhs.nhs.uk/issue/mental-health-support-teams/>



9-10.30AM
THURSDAY

9
OCTOBER

